



6197 Cornerstone Court E, Ste 102
San Diego, CA 92121

Product Specifications

CL650-anti-CH021

Description: CL650-anti-CH021 antibody 15 µg to stain 15-20 slides, cells or spheroids.
Cat. No.: UUH-650
Application: Multiplex immunoassays including fluorescent immunohistochemistry (IHC), immunocytochemistry (ICC) and ELISpot

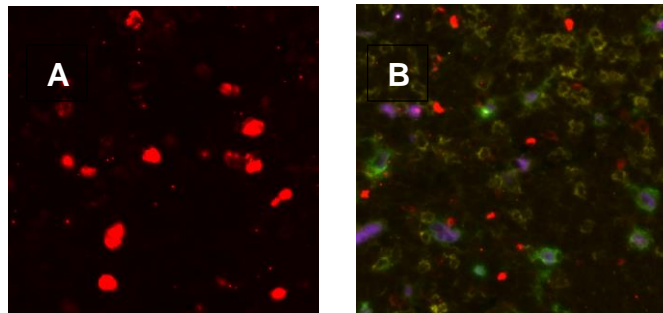
α -Tag Probe	Fluor	Absorbance (nm)	Emission (nm)	Extinction Coefficient (M ⁻¹ cm ⁻¹)	Recommended Exposure Time (ms)
CH021	CL650	655	676	250,000	200-400

Suitable for spectral imaging.

Components: CL650-anti-CH021 antibody 15 µg.

Storage: 2-8°C
Shelf-Life: Not determined.
Protocol: [LINK](#)

Notes:



(A) LAG3-CH021/anti-CH021-CL650, (B) *UltraTag* multiplex CD163/CD4/CD68/LAG3; primary and anti-hapten antibody staining @ 5 µg/mL; clones CD163 (EPR19518), CD4 (EP204), CD68 (68/684)/LAG3 (294)

Disclaimer: *For In vitro Research Use Only. Not for diagnostic or therapeutic use. Suggested applications of our products are not recommendations to use our products in violation of any patent or as a license under any patent of Cell IDx, Inc. Product may not be resold or modified for resale without prior written approval of Cell IDx, Inc.*

Version 1.0: Revision date 2.17.20