

## Product Specifications

### **UltraPlex HI-1A Fluorescent Multiplex IHC Panel – Human CD3, CD4, CD8, CD20**

**Description:** UltraPlex fluorescent multiplex IHC kit to detect human CD3, CD4, CD8 and CD20  
**Cat. No.:** HI01A-005  
**Application:** IHC-P. Multiplex fluorescent IHC staining of human FFPE tissue sections.  
**Product Overview:** All components required to stain 5 multiplex slides plus a single negative control slide with a simple two step protocol.

1° Antibody	Clone	1° Tag	2° Antibody	2° Fluor	Absorbance (nm)	Emission (nm)	Filter Set Examples	ExCoeff (M-1cm-1)
CD8	EPR10640 (2)	UT015	Anti-UT015	CL-490	491	515	FITC/GFP	73,000
CD4	EPR6855	UT014	Anti-UT014	CL-550	550	575	Rhodamine/TRITC/Cy3	150,000
CD3	CAL57	UT016	Anti-UT016	CL-650	655	676	Cy5	250,000
CD20	EP459Y	UT019	Anti-UT019	CL-750	759	780	Cy7	240,000

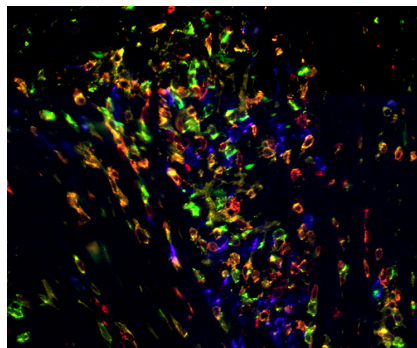
Optimized for use on FFPE tissue sections  
 Suitable for conventional imaging using defined filter sets.  
 Additional negative control (secondary reagents alone) are available, see NEG01A  
 Depending on your imaging scanner or microscope you may want to use Product HI01B with 490, 550, 594 and 650nm fluors instead.

**Components:**  
 Vial 1: Antibody Diluent Solution  
     PBS, 1% BSA, 0.2% Tween 20, 15mM sodium azide  
 Vial 2: Protein Block Solution  
     PBS, 3% normal rabbit serum, 0.1% TritonX, 15mM sodium azide  
 Vials 3-6: Primary Antibody-Tag  
     Each 10ul at 0.5ug/ul in PBS, 15mM sodium azide, suggested dilution 1/100  
 Vials 7-10: Secondary Antibody-Fluor  
     Each 12ul at 0.5ug/ul in PBS, 15mM sodium azide, suggested dilution 1/100

**Storage:** 2-8°C  
**Shelf-Life:** 6 months  
**Protocols:** Download and use the following suggested protocols:

	<b>Manual</b>	<b>Bond Rx</b>
Antigen Retrieval	<a href="#">LINK</a>	Not recommended for HI-1A or B
Staining	<a href="#">LINK</a>	Not recommended for HI-1A or B

**Notes:**



Bladder transitional cell carcinoma biopsy stained manually with HI-1A UltraPlex panel: CD3 (red), CD4 (yellow), CD8 (green), CD20 (purple). 20X magnification.

Suggested Mounting Medium: Fluoroshield plus DAPI, ImmunoBioScience  
 DO NOT USE: Vectashield Mounting Reagent, Vector Labs

**Disclaimer:** *For In vitro Research Use Only. Not for diagnostic or therapeutic use. Suggested applications of our products are not recommendations to use our products in violation of any patent or as a license under any patent of Cell IDx, Inc. Product may not be resold or modified for resale without prior written approval of Cell IDx, Inc.*